

Before you start:

1. You will need your office computer's IP address. There are several ways to get this. One of the easiest is to go to <http://www.whatismyip.com/>

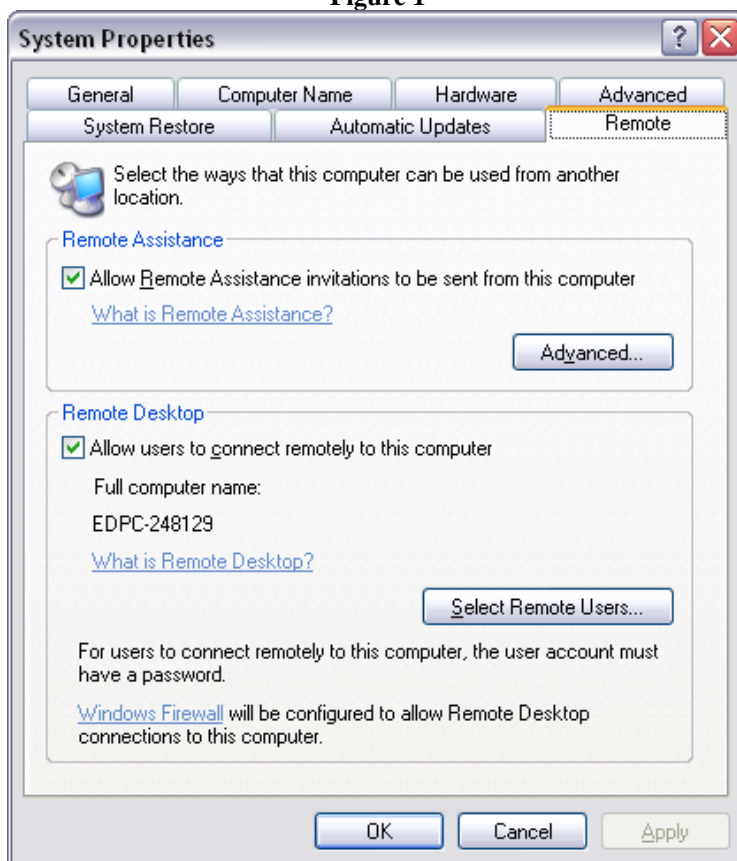
MY OFFICE COMPUTER'S IP ADDRESS IS: _____
(You don't need to know your home computer's IP address.)

2. If you are off campus, or your internet service provider is not TTU; you will have to configure a VPN to connect to your office computer. VPN instructions are located at: <http://www.depts.ttu.edu/helpcentral/directions/VPN/index.php> (If you have COX Internet, you must do this.)

3. Remote Connections must be enabled on your office computer. You can check this by right-clicking on you're 'My Computer' icon and selecting 'Properties'. On the 'Remote' tab, check 'Allow users to connect remotely to this computer.' See Figure 1



4. Your office computer must be turned on to connect to it remotely.

Figure 1



Remote desktop is included with Windows XP Professional and can be found by clicking:

START > ALL PROGRAMS > ASSESSORIES > COMMUNICATIONS > REMOTE DESKTOP CONNECTION

<p>Remote Desktop Connection</p> <p>When you start Remote Desktop from your home computer, you'll see this:</p> <p>Enter your office computer's IP address into the box and select Options.</p>	
<p>General</p> <p>Under Options, there are 5 tabs.</p> <p>The General tab has your IP, Username, Password, and domain.</p> <p>NOTE: This is the username you use to login to your office computer, not your email password.</p>	

Display

You can set the display tab to suit your preference. Selecting higher color levels and larger desktops will result in a slower connection.



Local Resources

On the local resources tab, select Printers.



Programs

Leave the Programs tab blank.

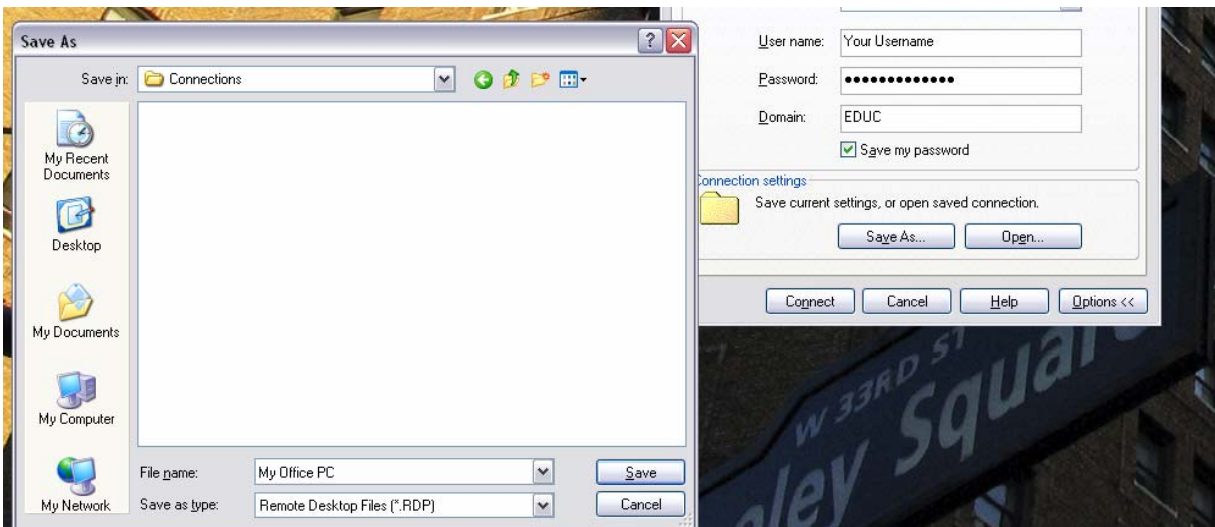


Experience

In the Experience tab, check only Bitmap caching. Other items may be selected, but this too will lower your connection speed.



After you have configured the Desktop Connection, save it in a convenient location on your home computer. You'll see the 'Save As' option on the General tab.



When you've configured and saved your remote connection, you're ready to connect. Each time you connect; (1) Start the VPN if necessary and (2) start the remote desktop. When you're done connecting to your office computer, you may disconnect the VPN.